



MINISTRY OF TOURISM AND ENVIRONMENT  
REPUBLIC OF MALDIVES

# MALDIVES TOURISM UPDATES

5th March 2026

## 502,252 Visitors

as of 4th March 2026.

## +8.8% Increase

compared to the same period of 2025

## 67,450 Beds

available for visitors. Out of which 45,009 were resort beds

## Key Markets

China (16.2%), Russia (11.7%), Italy (9.8%), United Kingdom (9.3%), Germany (6.4%), and India (3.7%)

## Major Highlights

February 2026 Sets New Tourism Records for the Maldives

Ministry Monitors Flight Disruptions and Engages Industry Stakeholders

Maldives Showcases Premium Tourism Offerings at ITB Berlin 2026



**2024** **2,074,442**

Total Visitors as at year-end

2,046,615 Tourists  
15,610 Business Arrivals  
12,217 Cruise Passengers

**2025** **2,275,088**

Total Visitors as at year-end

2,246,516 Tourists  
20,309 Business Arrivals  
8,263 Cruise Passengers

## International Visitor Arrivals - Monthly

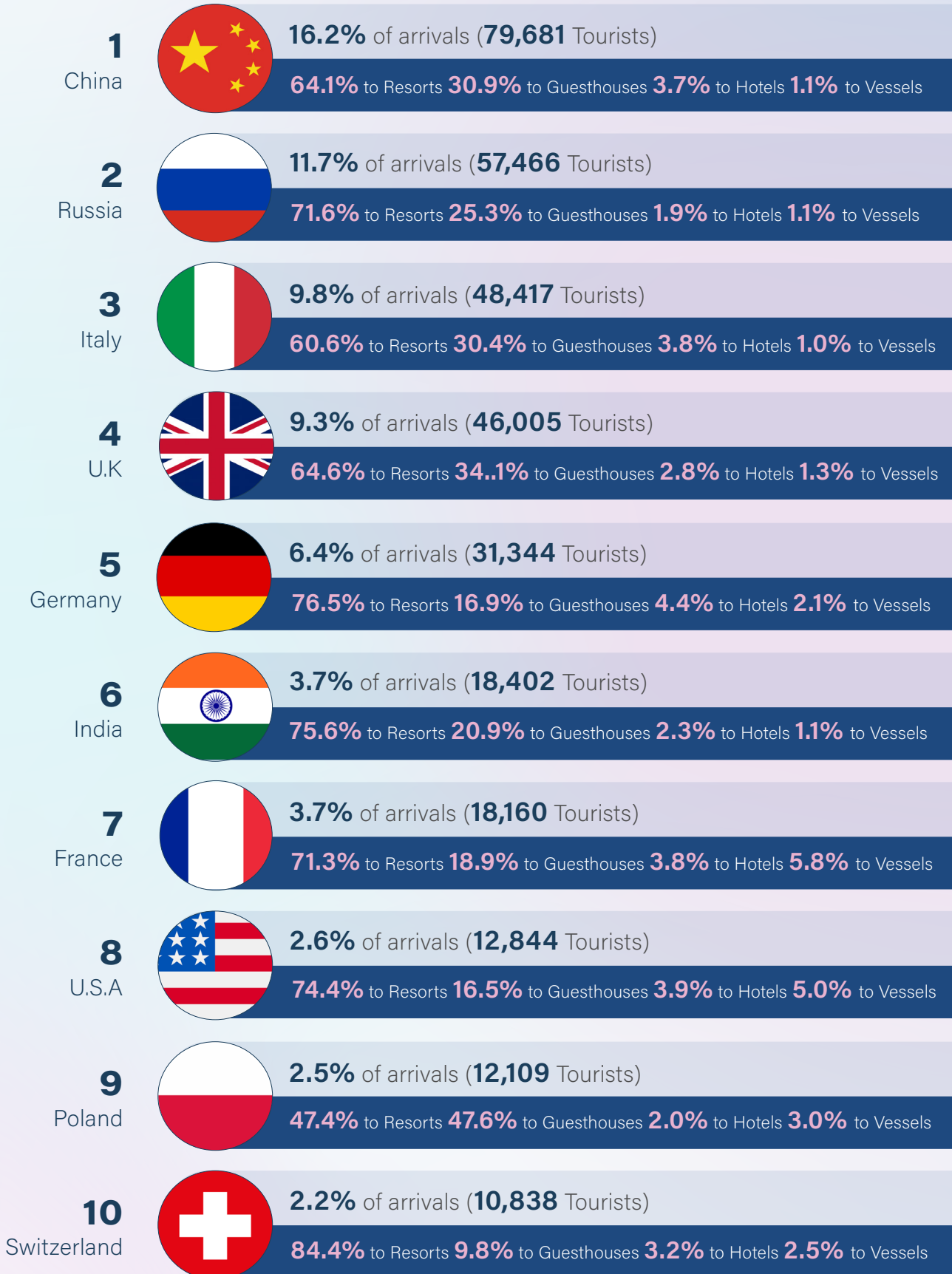
As of 4th Mar 2026

	Jan	Feb	Mar (1st-4th)	Total (as of 4th Mar)	Daily Average
<b>2024 Total Visitors</b>	195,143	218,631	27,318	441,092	7,001
Tourists	192,385	217,392	27,318	437,095	6,938
Business Arrivals	960	1,086	n/a	2,046	n/a
Cruise Passengers	1,798	153	n/a	1,951	n/a
<b>2025 Total Visitors</b>	216,544	216,309	28,986	461,839	7,331
Tourists	214,863	204,091	28,986	457,940	7,269
Business Arrivals	1,465	1,606	n/a	3,071	n/a
Cruise Passengers	216	612	n/a	828	n/a
<b>2026 Total Visitors</b>	227,403	254,365	20,484	502,252	7,972
Tourists	224,788	247,722	20,484	492,994	7,825
Business Arrivals	1,550	1,406	n/a	2,956	n/a
Cruise Passengers	1,065	5,237	n/a	6,302	n/a
<b>Growth % (2026/2025)</b>	5.0	17.7	-29.3	8.8	



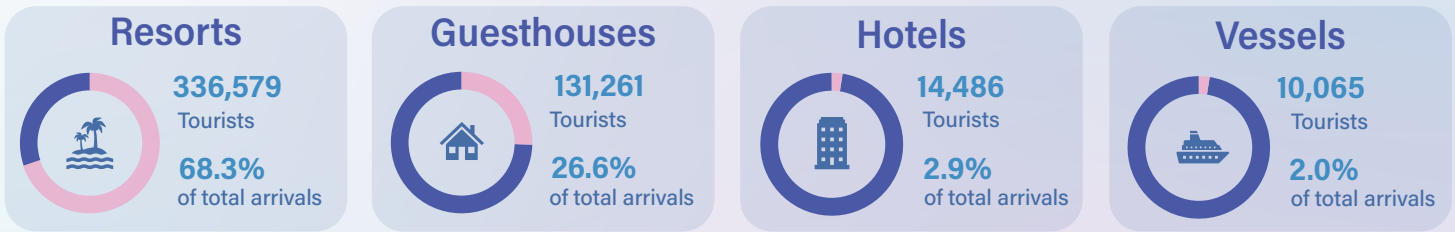
# Top 10 Nationalities & their Accommodation Preference

As of 4th Mar 2026



# Tourist Distribution to Facilities

As of 4th Mar 2026



## Total Visitors by Port of Entry

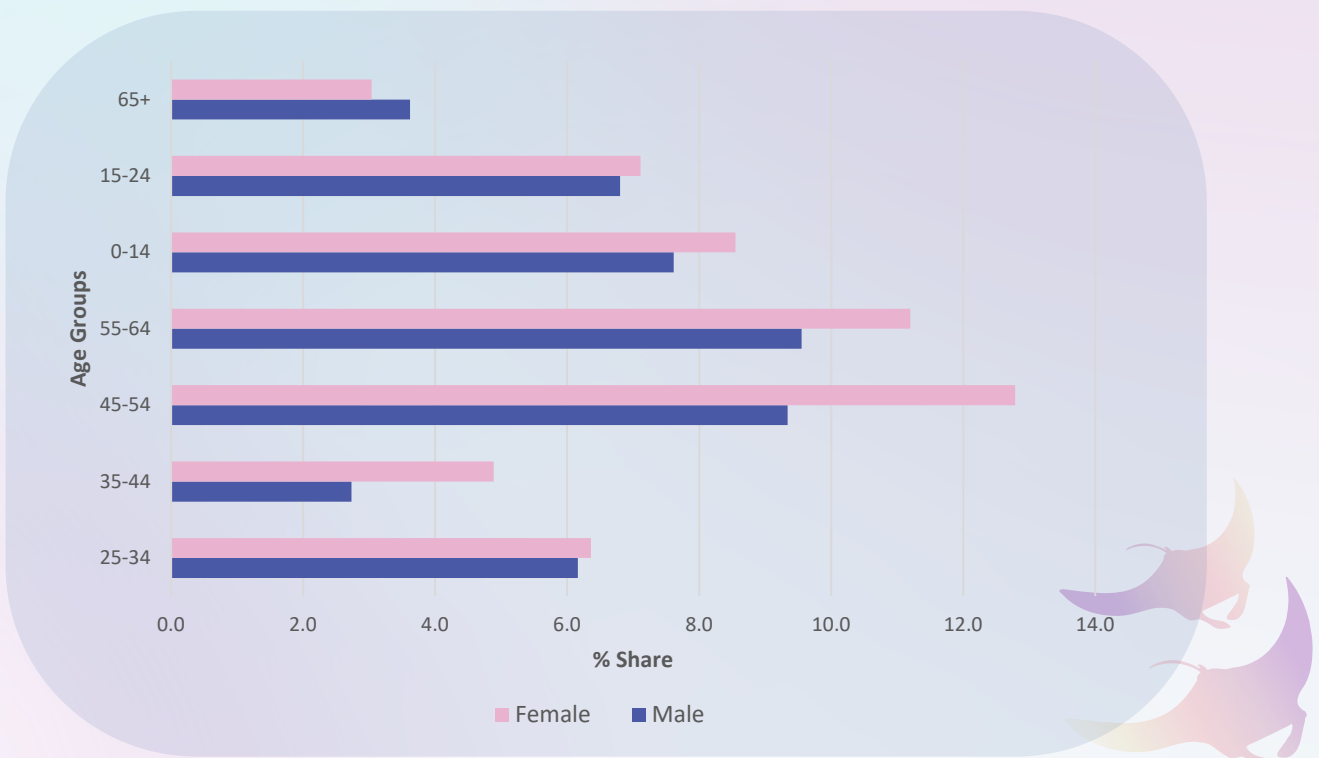
As of 4th Mar 2026



Airports	Arrivals	Share
Velana International Airport	489,699	97.5%
Hanimaadhoo International Airport	1,332	0.3%
Maafaru International Airport	1,792	0.4%
Gan International Airport	1,769	0.4%
Villa International Airport Maamigili	914	0.2%
Dhaalu Airport	444	0.1%
Sea Ports	Arrivals	Share
All	6,302	1.3%

## Tourists by Age Group & Gender

As of 4th Mar 2026





# Tourist Accommodation



## Total Capacity

As of 4th Mar 2026

# 98.6%

of the beds were in  
**Operation**

(as of 4th Mar 2026)

	Nos.	Beds
Resorts	186	45,995
Guesthouses	924	16,347
Hotels	16	2,598
Tourist Vessels	171	3,496
<b>Total</b> (As of 4th Mar)	<b>1,297</b>	<b>68,436</b>

## Capacity in Operation

As of 4th Mar 2026



Resorts

# 67%

of total bed capacity in **19 atolls**  
**180** resorts/islands with **45,009** beds



Guesthouses

# 24%

of total bed capacity  
in **114 islands** of **20 atolls**  
**924** guesthouses with **16,347** beds



Hotels

# 4%

of total bed capacity  
in **9 islands** of **8 atolls**  
**16** hotels with **2,598** beds



Vessels

# 5%

of total bed capacity  
**171** tourist vessels with **3,496** beds



# Arrivals & Beds Distribution by Atolls

As of 4th Mar 2026

Atolls	Arrivals (Resorts, Hotels & Guesthouses)	Beds			
		Total	Resorts	Hotels	Guesthouses
Haa Alifu	3,765	730	448		282
Haa Dhaalu	1,698	392	162	104	126
Shaviyani	4,017	516	444		72
Noonu	20,692	2,806	2,580		226
Raa	35,891	4,966	4,560	300	106
Baa	28,921	4,852	3,424	150	1,278
Lhaviyani	21,890	3,370	3,326		44
Kaafu	211,353	25,026	15,650	1,604	7,772
Alifu Alifu	40,532	4,937	2,518		2,419
Alifu Dhaalu	45,024	6,230	4,298	88	1,844
Vaavu	16,718	1,628	794	52	782
Meemu	4,644	666	614		52
Faafu	1,576	346	250		96
Dhaalu	20,679	2,968	2,864		104
Thaa	973	290	152		138
Laamu	2,329	440	360		80
Gaafu Alifu	9,178	1,589	1,301	144	144
Gaafu Dhaalu	4,680	566	440		126
Gnaviyani	2,590	370			370
Seenu	5,249	1,266	824	156	286
<b>Total</b>	<b>482,326</b>	<b>63,954</b>	<b>45,009</b>	<b>2,598</b>	<b>16,347</b>





# Air Connectivity

UPDATED ON JANUARY 2026



AIRLINES		NO. FLIGHTS (MONTHLY)	NO. PAX	AIRLINES		NO. FLIGHTS (MONTHLY)	NO. PAX	AIRLINES		NO. FLIGHTS (MONTHLY)	NO. PAX
AEROFLOT	AEROFLOT	46	15,005	CENTRUM AIR	CENTRUM AIR	4	425	SAUDI ARABIAN AIRLINES	SAUDI ARABIAN AIRLINES	14	3,331
AIR ARABIA	AIR ARABIA	62	7,919	CONDOR	CONDOR	23	6,160	SICHUAN AIRLINES	SICHUAN AIRLINES	8	1,248
AIR ASIA	AIR ASIA	61	9,709	EDELWEISS	EDELWEISS	13	2,811	SINGAPORE AIRLINES	SINGAPORE AIRLINES	63	13,887
AIR ASIA THAILAND	AIR ASIA THAILAND	31	4,916	EMIRATES	EMIRATES	155	32,407	SRILANKAN AIRLINES	SRILANKAN AIRLINES	93	20,171
AIR ASTANA	AIR ASTANA	24	4,060	ETIHAD AIRWAYS	ETIHAD AIRWAYS	93	19,148	TITAN AIRWAYS	TITAN AIRWAYS	1	56
AIR FRANCE	AIR FRANCE	2	195	EUROWINGS DISCOVER	EUROWINGS DISCOVER	8	2,001	TURKISH AIRLINES	TURKISH AIRLINES	88	11,490
AIR INDIA	AIR INDIA	31	3,995	FITS AVIATION	FITS AVIATION	40	5,627	US BANGLA AIRLINES	US BANGLA AIRLINES	22	3,914
AUSTRIAN AIRLINES	AUSTRIAN AIRLINES	26	7,529	FLY DUBAI	FLY DUBAI	135	15,005	UZBEKISTAN AIRWAYS	UZBEKISTAN AIRWAYS	4	853
AZUR AIR RUSSIA	AZUR AIR RUSSIA	20	1,207	GULF AIR	GULF AIR	66	4,242	VIRGIN ATLANTIC	VIRGIN ATLANTIC	31	6,300
AZERBAIJAN AIRLINES	AZERBAIJAN AIRLINES	13	1,274	HISKY EUROPE	HISKY EUROPE	5	1,041				
BATIK AIR	BATIK AIR	31	4,251	HONG KONG AIRLINES	HONG KONG AIRLINES	2	278				
BANGKOK AIRWAYS	BANGKOK AIRWAYS	1	122	INDIGO	INDIGO	124	17,477				
BEOND	BEOND	50	562	ITA AIRWAYS	ITA AIRWAYS	17	3,863				
BEIJING CAPITAL AIRLINES	BEIJING CAPITAL AIRLINES	4	1,081	MALAYSIAN AIRLINES	MALAYSIAN AIRLINES	48	7,589				
BRITISH AIRWAYS	BRITISH AIRWAYS	31	6,800	MALDIVIAN	MALDIVIAN	88	13,593				
CHINA EASTERN	CHINA EASTERN	23	4,268	NEOS	NEOS	13	4,502				
CHONGQING AIRLINES	CHONGQING AIRLINES	10	1,322	QATAR AIRWAYS	QATAR AIRWAYS	116	21,214				



## February 2026 Sets New Tourism Records for the Maldives

February 2026 set a record for Maldives Tourism with the largest number of visitors in a single month.

# 247,722

Tourist Arrivals



February 2026 marked a historic milestone for tourism in the Maldives, recording the highest performance levels ever achieved.

The month saw a total of 247,722 arrivals, making it the strongest single month on record. A new highest single-day arrival was recorded on 14 February 2026, with 11,136 tourists welcomed to the country.

In addition, February achieved the highest-ever daily average for a month, with 8,847 arrivals per day. These figures reflect sustained global demand and continued confidence in the Maldives as a premier travel destination.



## Ministry Monitors Flight Disruptions and Engages Industry Stakeholders



On 28 February 2026, Minister of Tourism and Environment, Thoriq Ibrahim, visited Velana International Airport to review arrangements and operational measures in place to assist passengers affected by ongoing flight disruptions. The Ministry is closely monitoring developments in the Middle East and coordinating with industry partners to provide support, including accommodation and essential assistance, to travelers until normal flight operations resume.



Following up on these efforts, on 3 March 2026, Minister met with key industry stakeholders to assess the evolving situation in the Middle East and its potential impact on tourism. The discussions emphasized stability, preparedness, and proactive coordination across the sector to ensure continued support for passengers and the resilience of Maldives' tourism operations.

## Maldives and China Discuss Strengthening Tourism and Environmental Cooperation



The Minister of Tourism and Environment, H.E. Thoriq Ibrahim, held a meeting with H.E. the Chinese Ambassador to the Maldives to discuss avenues for enhancing cooperation in tourism and environmental sustainability between the two countries.



The discussions focused on further strengthening the Chinese market as a vital source of visitors to the Maldives, while exploring opportunities to deepen bilateral collaboration across shared priority areas. Both sides acknowledged the longstanding partnership between the Maldives and China, particularly China's consistent role as one of the Maldives' leading tourism source markets. The discussions underscored the value of expanding interpersonal and cultural linkages alongside economic cooperation.



## Maldives Showcases Premium Tourism Offerings at ITB Berlin 2026



The Maldives kicked off its participation at ITB Berlin with a strong and productive start on 3 March 2026, reinforcing strategic partnerships and raising its profile in the global tourism market. The opening day featured high-level talks, new collaboration opportunities, and engaging destination showcases that highlighted the Maldives' premium appeal.



On the second day, Visit Maldives presented the nation's rich culture, craftsmanship, and culinary experiences, concluding with a vibrant Maldivian Evening that emphasized authentic, sustainable, and luxury tourism offerings.



In a key initiative, Visit Maldives, in partnership with Bank of Maldives, officially launched Swipe as the Maldives' digital wallet for visitors, offering seamless payments and enhancing the overall premium experience for travelers at ITB Berlin 2026.



TOURISM RESEARCH & STATISTICS SECTION

Ministry of Tourism and Environment

5th Floor | Velanaage | Ameeru Ahmed Magu | Male' | Republic of Maldives

🌐 [www.tourism.gov.mv](http://www.tourism.gov.mv) ✉ [stat@tourism.gov.mv](mailto:stat@tourism.gov.mv) ☎ +960 3022235 | 3022250 | 3022200

