



MINISTRY OF TOURISM AND CIVIL AVIATION
REPUBLIC OF MALDIVES



MALDIVES TOURISM UPDATES

7th May 2026

831,254 Visitors`

(-5.4%)
as of 6th May 2026

74.40% SLF (Arrival Seat Load Factor)

(+4.8%)
as of 29th April 2026

68,155 Beds

available for visitors. Out of which 45,101
were resort beds

Key Markets

China (15.5%), Russia (13.2%), United Kingdom (9.1%), Italy (8.2%), Germany (6.7%), and India (4.9%)

Major Highlights

Minister of Tourism and Civil Aviation meets with Maldives Association of Yacht Agents

Visit Maldives Corporation Opens Creatoll for Public Beta Testing

Tourist Arrivals



2024 **2,074,442**

Total Visitors as at year-end

2,046,615 Tourists
15,610 Business Arrivals
12,217 Cruise Passengers

2025 **2,275,088**

Total Visitors as at year-end

2,246,516 Tourists
20,309 Business Arrivals
8,263 Cruise Passengers

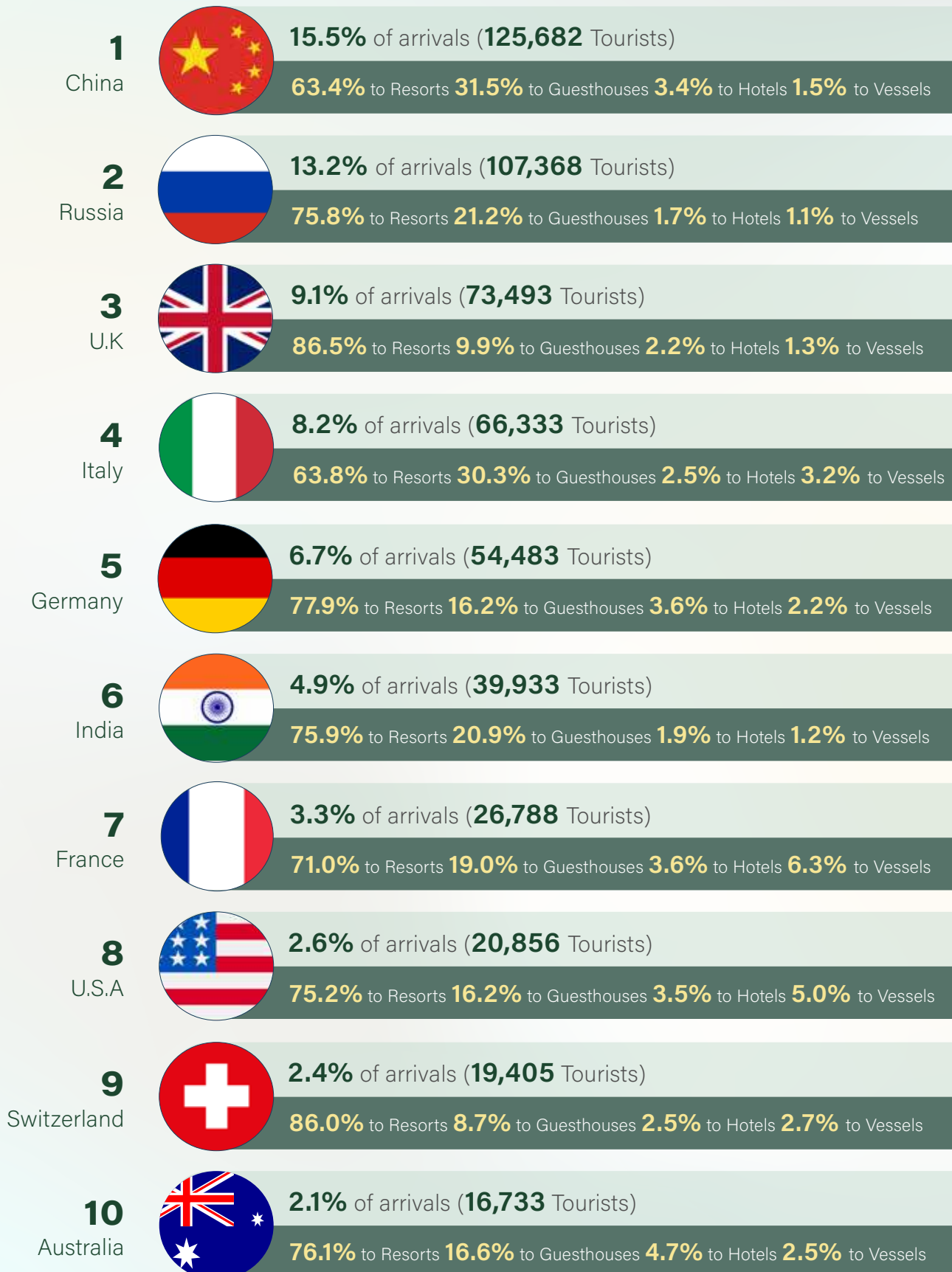
International Visitor Arrivals - Monthly

As of 6th May 2026

	Jan	Feb	Mar	Apr	May (1-6th)	Total (as of 6th May)	Daily Average
2024 Total Visitors	195,143	218,631	197,047	172,477	30,212	813,510	6,456
Tourists	192,385	217,392	194,227	168,366	30,212	802,582	6,370
Business Arrivals	960	1,086	1,034	926	n/a	4,006	n/a
Cruise Passengers	1,798	153	1,786	3,185	n/a	6,922	n/a
2025 Total Visitors	216,544	216,309	207,707	202,214	35,718	878,492	6,972
Tourists	214,863	204,091	203,468	198,322	35,718	866,462	6,877
Business Arrivals	1,465	1,606	1,314	2,022	n/a	6,407	n/a
Cruise Passengers	216	612	2,925	1,870	n/a	5,623	n/a
2026 Total Visitors	227,403	254,556	166,616	152,861	25,809	827,245	6,565
Tourists	224,788	247,722	161,259	147,600	25,809	807,178	6,406
Business Arrivals	1,550	1,597	1,308	1,804	n/a	6,259	n/a
Cruise Passengers	1,065	5,237	4,049	3,457	n/a	13,808	n/a
Growth % (2026/25)	5.0	17.7	-19.8	-24.4	-16.7	-5.8	-

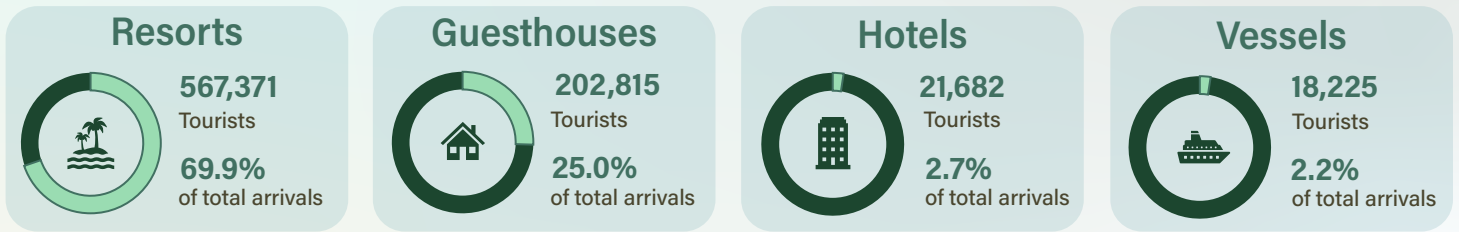
Top 10 Nationalities & their Accommodation Preference

As of 6th May 2026



Tourist Distribution to Facilities

As of 6th May 2026



Total Visitors by Port of Entry

As of 6th May 2026

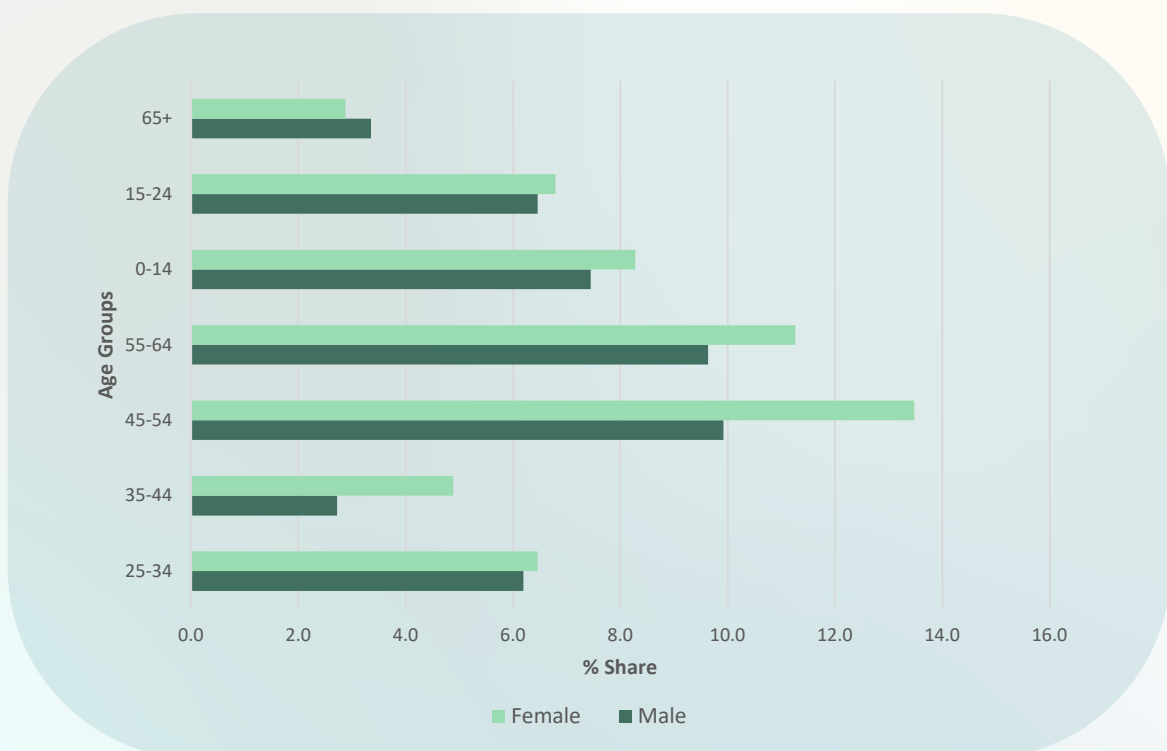


Airports	Arrivals	Share
Velana International Airport	807,016	97.1%
Hanimaadhoo International Airport	1,892	0.2%
Maafaru International Airport	3,014	0.4%
Gan International Airport	3,360	0.4%
Villa International Airport Maamigili	1,493	0.2%
Dhaalu Airport	671	0.1%
Sea Ports	Arrivals	Share
All	13,808	1.7%



Tourists by Age Group & Gender

As of 6th May 2026





Tourist Accommodation

Total Capacity

As of 6th May 2026

98.6%

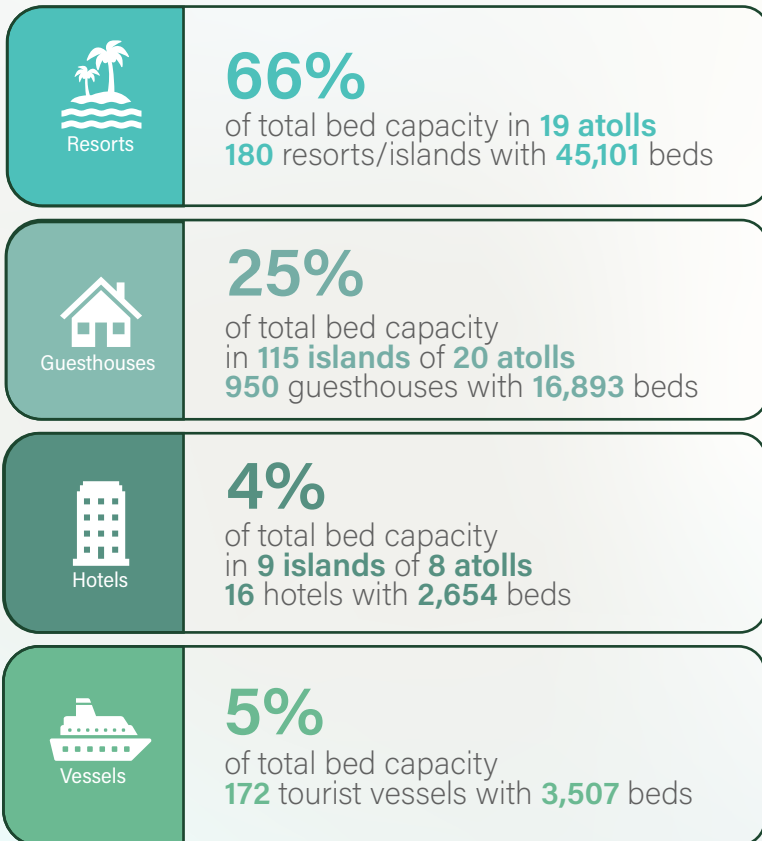
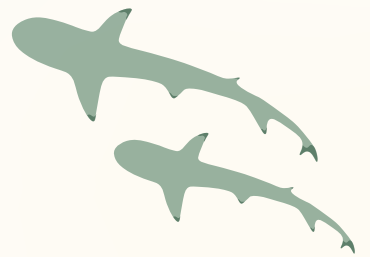
of beds were in Operation

(as of 6th May 2026)

	Nos.	Beds
Resorts	186	46,087
Guesthouses	950	16,893
Hotels	16	2,654
Tourist Vessels	172	3,507
Total (As of 6th May)	1,324	69,141

Capacity in Operation

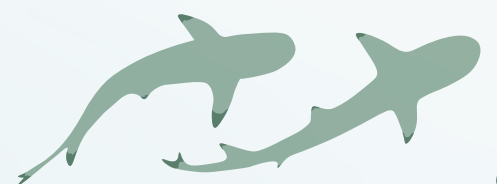
As of 6th May 2026



Arrivals & Beds Distribution by Atolls

As of 6th May 2026

Atolls	Arrivals (Resorts, Hotels & Guesthouses)	Beds			
		Total	Resorts	Hotels	Guesthouses
Haa Alifu	6,040	730	448		282
Haa Dhaalu	2,488	392	162	104	126
Shaviyani	6,464	516	444		72
Noonu	34,590	2,814	2,580		234
Raa	61,920	4,954	4,560	300	94
Baa	46,744	4,994	3,442	150	1,402
Lhaviyani	36,528	3,446	3,402		44
Kaafu	353,587	25,284	15,640	1,646	7,998
Alifu Alifu	62,337	4,945	2,518		2,427
Alifu Dhaalu	72,456	6,276	4,306	102	1,868
Vaavu	26,459	1,656	794	52	810
Meemu	7,038	686	614		72
Faafu	2,354	346	250		96
Dhaalu	32,896	2,968	2,864		104
Thaa	1,521	290	152		138
Laamu	3,470	500	360		140
Gaafu Alifu	14,949	1,595	1,301	144	150
Gaafu Dhaalu	7,846	566	440		126
Gnaviyani	4,201	404			404
Seenu	7,980	1,286	824	156	306
Total	791,868	64,648	45,101	2,654	16,893

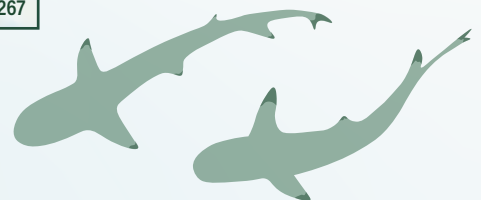




MARCH 2026



AIRLINES		NO. FLIGHTS (WEEKLY)	NO. PAX	AIRLINES		NO. FLIGHTS (WEEKLY)	NO. PAX	AIRLINES		NO. FLIGHTS (WEEKLY)	NO. PAX
	AEROFLOT	21	19,886		CONDOR	11	6,820		SAUDIA	7	3,653
	AIR ARABIA	-	159		EDELWEISS	6	4,162		SICHUAN AIRLINES	3	1,067
	AIR ASIA	24	7,559		EMIRATES	20	6,810		SINGAPORE AIRLINES	25	13,524
	AIR ASIA THAILAND	12	3,523		ETIHAD AIRWAYS	16	2,940		SMARTWINGS	2	6
	AIR ASTANA	10	4,399		EUROWINGS	5	2,488		SRILANKAN AIRLINES	29	18,966
	AIR INDIA	14	4,535		FITS AIR	16	3,644		TURKISH AIRLINES	17	11,596
	AUSTRIAN AIRLINES	9	7,349		FLY DUBAI	9	1,105		US BANGLA AIRLINES	9	3,386
	AZERBAIJAN AIRLINES	5	1,688		HISKY EUROPE	2	589		VIRGIN ATLANTIC	12	7,368
	AZUR AIR	5	928		HONG KONG AIRLINES	-	236	<i>Note: Air Arabia, Hong Kong Airlines & Icelandair operated 1 flight each in March 2026</i>			
	BANGKOK AIRWAYS	7	1,130		ICELANDAIR	-	64				
	BATIK AIR	10	2,678		INDIGO	50	13,314				
	BEIJING CAPITAL AIRLINES	3	1,584		ITA AIRWAYS	5	3,551				
	BEOND	13	685		MALAYSIAN AIRLINES	18	5,771				
	BRITISH AIRWAYS	12	7,171		MALDIVIAN	24	6,306				
	CENTRUM AIR	3	415		NEOS	8	5,120				
	CHINA EASTERN	12	4,278		QATAR AIRWAYS	2	308				
	CHONGQING AIRLINES	5	1,641		SAN MARINO EXECUTIVE AVIATION SRL	1	267				

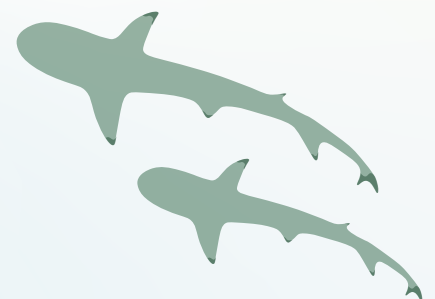




Minister of Tourism and Civil Aviation meets with Maldives Association of Yacht Agents



As part of an introductory engagement with key stakeholders in the tourism industry, Minister of Tourism and Civil Aviation, H.E. Mohamed Ameen, held discussions with senior officials of the Maldives Association of Yacht Agents (MAYA). Discussions centered on fostering closer ties with industry stakeholders and driving the sustainable development of the tourism sector.



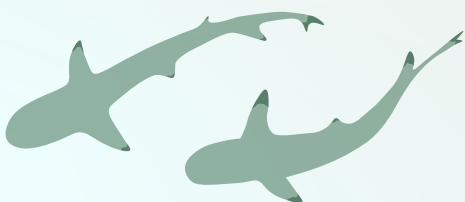
Visit Maldives Corporation Opens Creatoll for Public Beta Testing

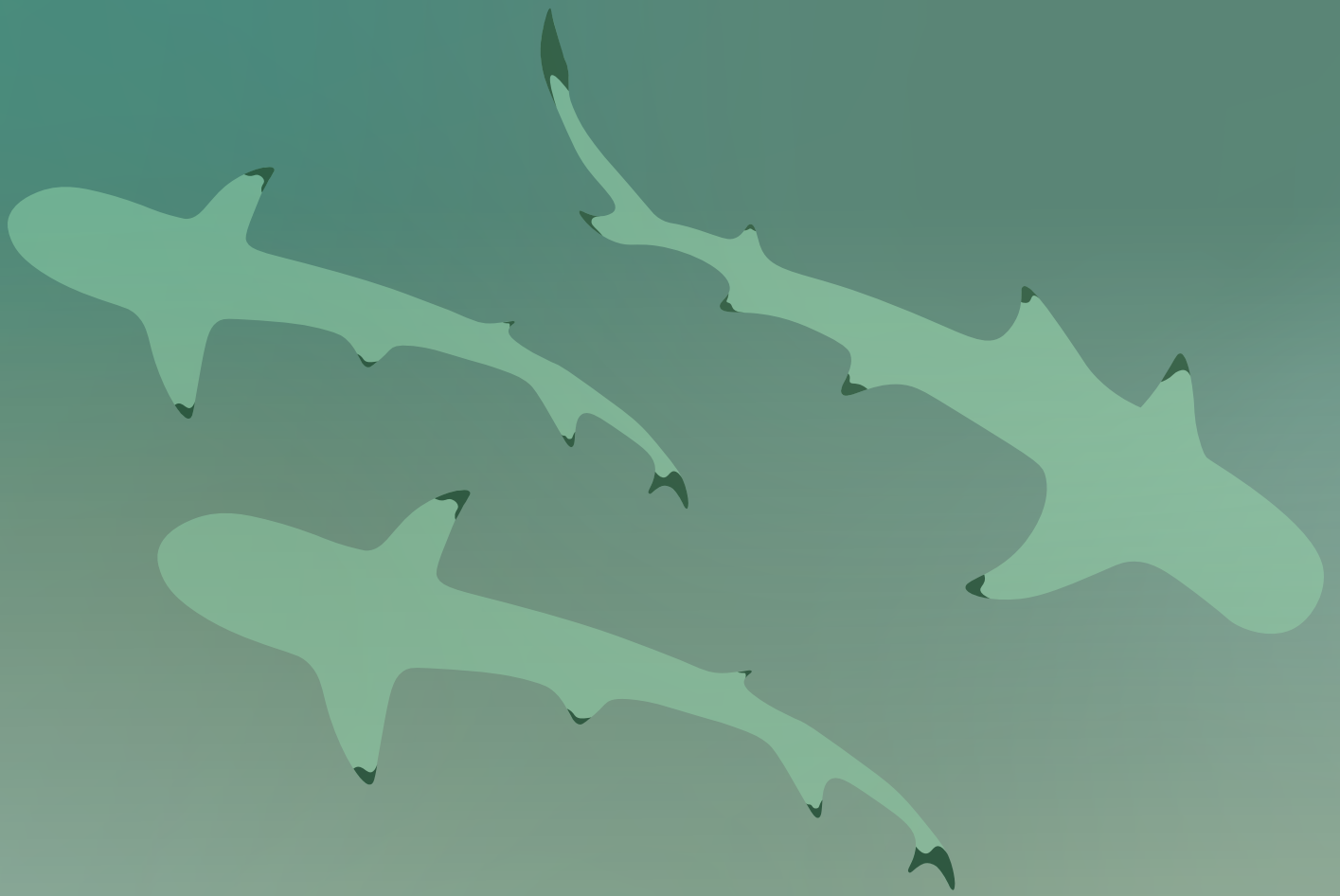


Visit Maldives Corporation (VMC) has opened Creatoll, its global content creator platform, for public beta testing, inviting creators and industry stakeholders to engage with the platform ahead of its full release.

Creatoll was first introduced as a dedicated content marketplace designed to connect Maldivian and international creators with tourism partners, brands, and global audiences. The platform enables users to showcase, license, and monetise content that reflects authentic experiences across the Maldives.

The public beta phase marks the next step in preparing the platform for full access. VMC is inviting creators, photographers, videographers, and tourism stakeholders to actively test the platform and provide feedback to support its continued development.





TOURISM RESEARCH & STATISTICS SECTION

Ministry of Tourism and Civil Aviation

5th Floor | Velanaage | Ameeru Ahmed Magu | Male' | Republic of Maldives

● www.tourism.gov.mv ✉ stat@tourism.gov.mv ☎ +960 3022235 | 3022250 | 3022200

