



MINISTRY OF TOURISM AND ENVIRONMENT  
REPUBLIC OF MALDIVES



# MALDIVES TOURISM UPDATES

1st March 2026

**459,262 Visitors**

as of 26th February 2026.

**+9.7% Increase**

compared to the same period of 2025

**67,198 Beds**

available for visitors. Out of which 44,891 were resort beds

## Key Markets

China (16.4%), Russia (11.4%), Italy (9.7%), United Kingdom (9.2%), Germany (6.1%), and India (3.7%)

## Major Highlights

Maldives Sets Stage for ITB Berlin 2026: Signature Night & Global Engagement





**2024** **2,071,308**

Total Visitors as at year-end

**2,046,615** Tourists  
**12,476** Business Arrivals  
**12,712** Cruise Passengers

**2025** **2,270,714**

Total Visitors as at year-end

**2,246,516** Tourists  
**15,935** Business Arrivals  
**8,263** Cruise Passengers

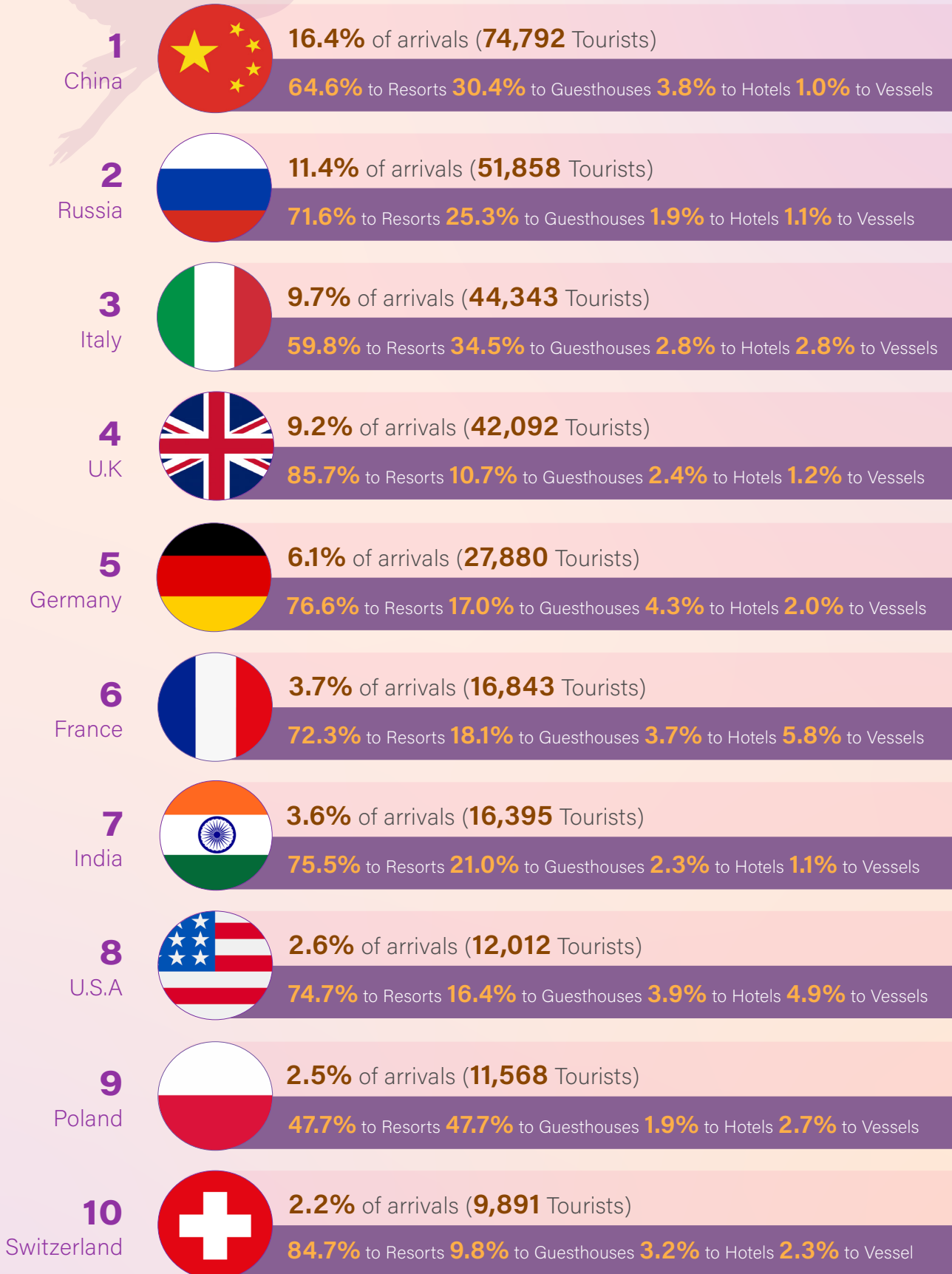
## International Visitor Arrivals - Monthly

As of 26th Feb 2026

	Jan	Feb <small>(1st-26th)</small>	Total <small>(as of 26th Feb)</small>	Daily Average
<b>2024 Total Visitors</b>	195,028	200,004	395,032	6,930
Tourists	192,385	200,004	392,389	6,884
Business Arrivals	845	n/a	845	n/a
Cruise Passengers	1,798	n/a	1,798	n/a
<b>2025 Total Visitors</b>	216,265	202,371	418,636	7,344
Tourists	214,863	202,371	417,234	7,320
Business Arrivals	1,186	n/a	1,186	n/a
Cruise Passengers	216	n/a	216	n/a
<b>2026 Total Visitors</b>	227,198	232,064	459,262	8,057
Tourists	224,788	232,064	456,852	8,015
Business Arrivals	1,345	n/a	1,345	n/a
Cruise Passengers	1,065	n/a	1,065	n/a
<b>Growth % (2026/2025)</b>	5.1	14.7	9.7	

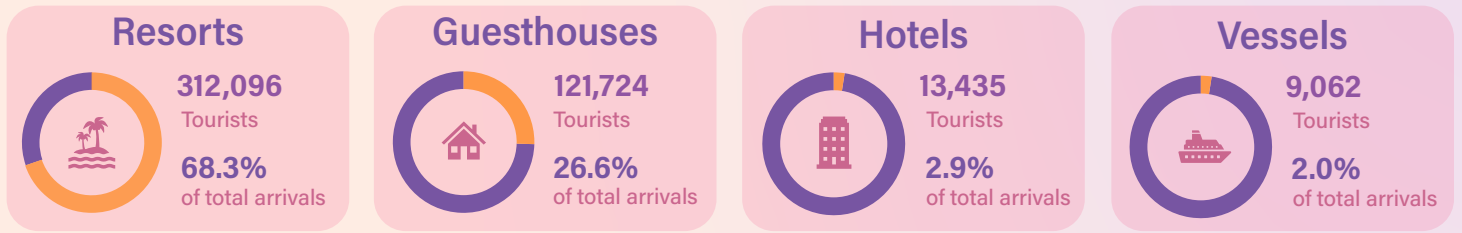
# Top 10 Nationalities & their Accommodation Preference

As of 26th Feb 2026



# Tourist Distribution to Facilities

As of 26th Feb 2026



## Total Visitors by Port of Entry

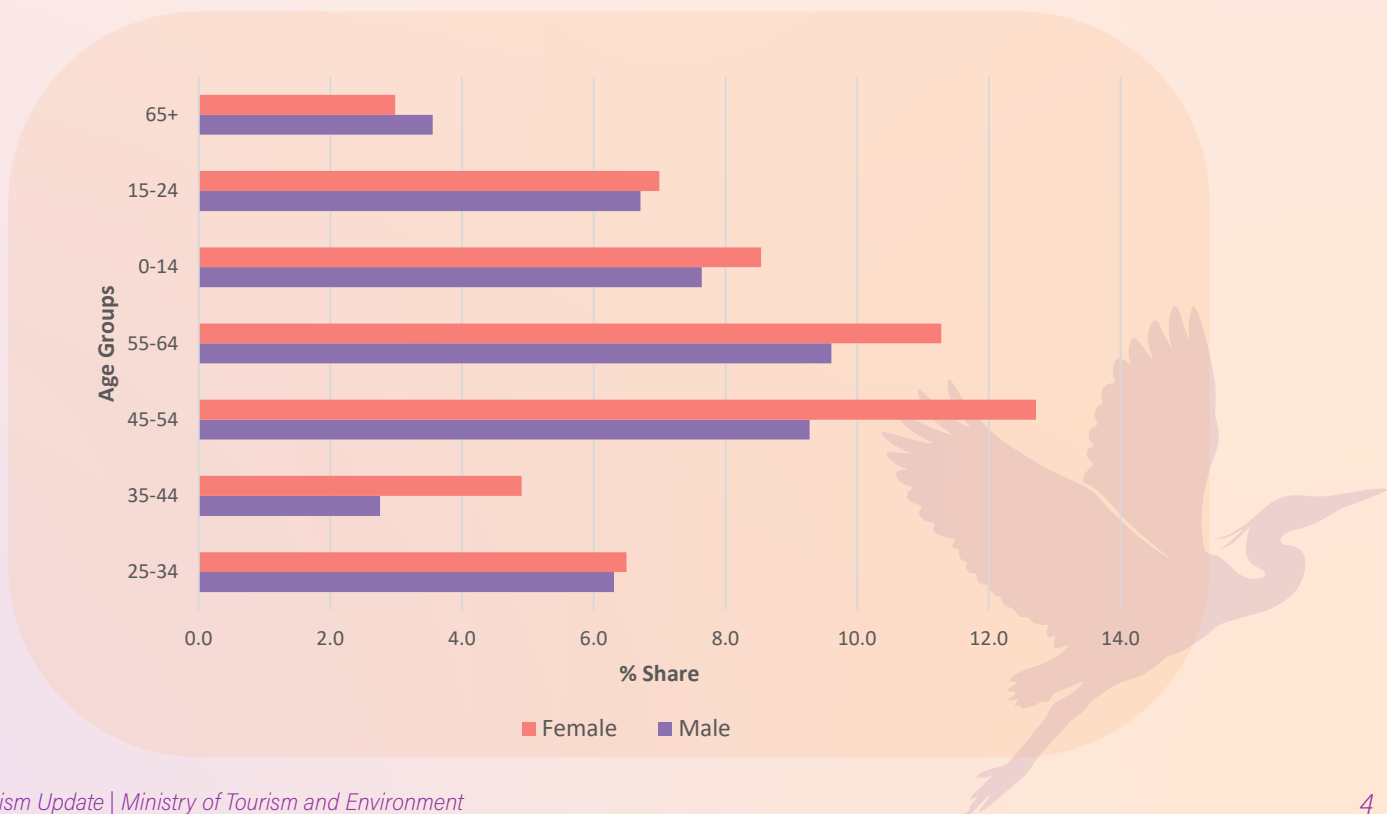
As of 26th Feb 2026



Airports	Arrivals	Share
Velana International Airport	452,476	98.8%
Hanimaadhoo International Airport	1,222	0.3%
Maafaru International Airport	1,639	0.4%
Gan International Airport	1,610	0.4%
Villa International Airport Maamigili	842	0.2%
Dhaalu Airport	409	0.1%
Sea Ports	Arrivals	
All	1,065	

## Tourists by Age Group & Gender

As of 26th Feb 2026





## Total Capacity

As of 26th Feb 2026

# 98.5%

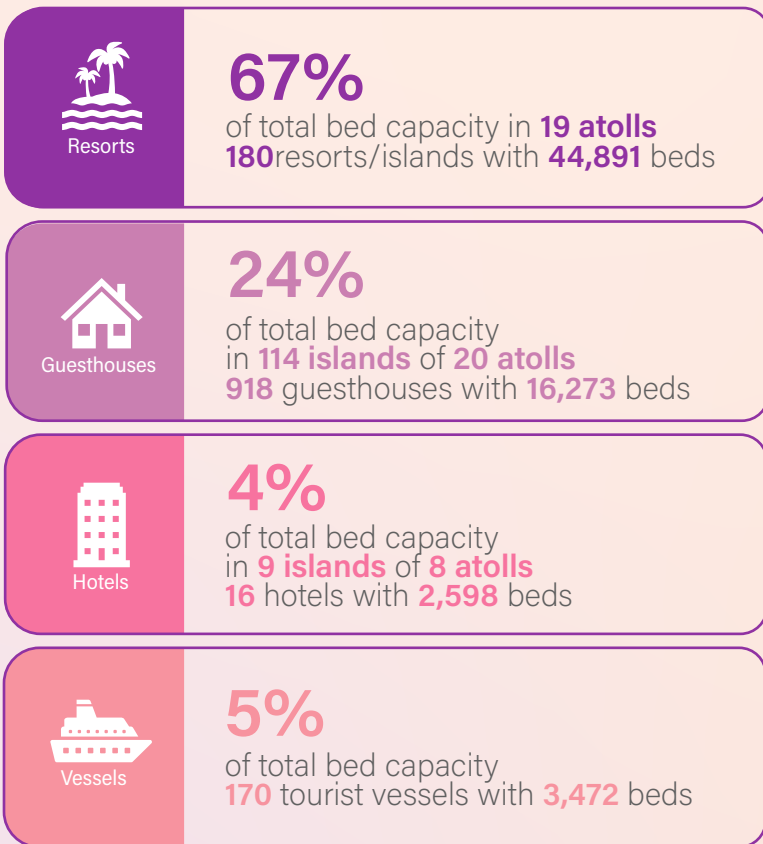
of the beds were in  
**Operation**

(as of 26th Feb 2026)

	Nos.	Beds
Resorts	186	45,877
Guesthouses	918	16,273
Hotels	16	2,598
Tourist Vessels	170	3,472
<b>Total</b> (As of 26th Feb)	<b>1,290</b>	<b>68,184</b>

## Capacity in Operation

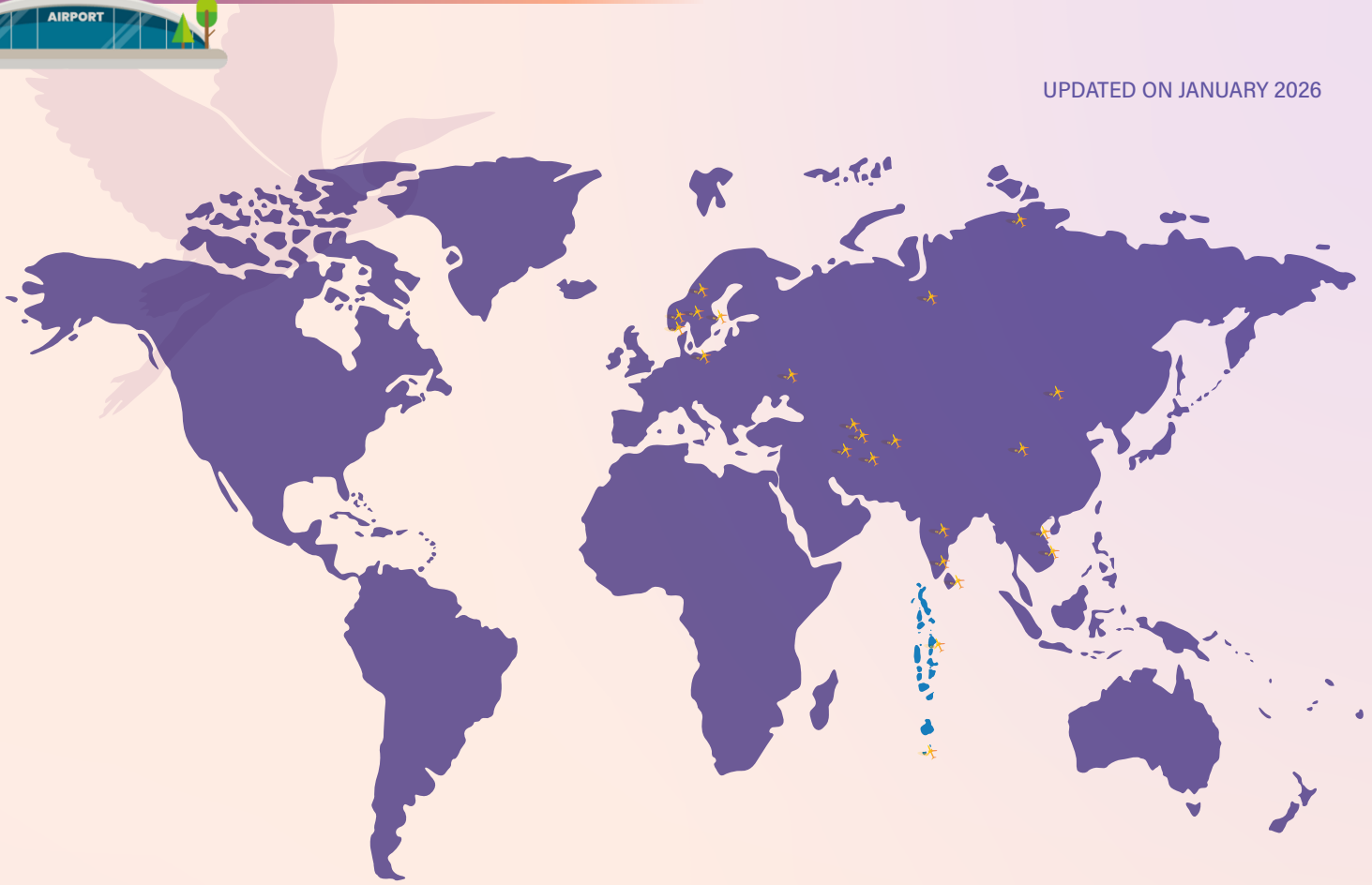
As of 26th Feb 2026



# Arrivals & Beds Distribution by Atolls

As of 26th Feb 2026

Atolls	Arrivals (Resorts, Hotels & Guesthouses)	Beds			
		Total	Resorts	Hotels	Guesthouses
Haa Alifu	3,512	730	448		282
Haa Dhaalu	1,570	392	162	104	126
Shaviyani	3,708	516	444		72
Noonu	19,134	2,784	2,566		218
Raa	33,221	4,954	4,548	300	106
Baa	26,741	4,852	3,424	150	1,278
Lhaviyani	20,436	3,370	3,326		44
Kaafu	196,321	24,960	15,650	1,604	7,706
Alifu Alifu	37,450	4,837	2,426		2,411
Alifu Dhaalu	41,696	6,222	4,298	88	1,836
Vaavu	15,333	1,608	794	52	762
Meemu	4,337	666	614		52
Faafu	1,483	346	250		96
Dhaalu	19,250	2,968	2,864		104
Thaa	889	290	152		138
Laamu	2,161	440	360		80
Gaafu Alifu	8,389	1,589	1,301	144	144
Gaafu Dhaalu	4,355	566	440		126
Gnaviyani	2,361	370			370
Seenu	4,909	1,266	824	156	286
<b>Total</b>	<b>447,256</b>	<b>63,726</b>	<b>44,891</b>	<b>2,598</b>	<b>16,273</b>



AIRLINES	ATM (MONTHLY)	NO. PAX	AIRLINES	ATM (MONTHLY)	NO. PAX	AIRLINES	ATM (MONTHLY)	NO. PAX
AEROFLOT	92	15,005	CENTRUM AIR	8	425	SAUDI ARABIAN AIRLINES	28	3,331
AIR ARABIA	124	7,919	CONDOR	46	6160	SICHUAN AIRLINES	16	1,248
AIR ASIA	122	9,709	EDELWEISS	26	2,811	SINGAPORE AIRLINES	126	13,887
AIR ASIA THAILAND	62	4,916	EMIRATES	310	32,407	SRILANKAN AIRLINES	186	20,171
AIR ASTANA	48	4,060	ETIHAD AIRWAYS	186	19,148	TITAN AIRWAYS	2	56
AIR FRANCE	4	195	EUROWINGS DISCOVER	16	2,001	TURKISH AIRLINES	88	11,490
AIR INDIA	62	3,995	FITS AVIATION	80	5,627	US BANGLA AIRLINES	44	3,914
AUSTRIAN AIRLINES	52	7,529	FLY DUBAI	270	15,005	UZBEKISTAN AIRWAYS	8	853
AZUR AIR RUSSIA	40	1,207	GULF AIR	132	4,242	VIRGIN ATLANTIC	62	6,300
AZERBAIJAN AIRLINES	26	1,274	HISKY EUROPE	10	1,041			
BATIK AIR	62	4,251	HONG KONG AIRLINES	2	278			
BANGKOK AIRWAYS	22	122	INDIGO	248	17,477			
BEOND	50	562	ITA AIRWAYS	34	3,863			
BEIJING CAPITAL AIRLINES	8	1,081	MALAYSIAN AIRLINES	96	7,589			
BRITISH AIRWAYS	62	6,800	MALDIVIAN	176	13,593			
CHINA EASTERN	46	4,268	NEOS	26	4,502			
CHONGQING AIRLINES	20	1,322	QATAR AIRWAYS	232	21,214			

ATM: AIR TRAFFIC MOVEMENT



## Maldives Sets Stage for ITB Berlin 2026: Signature Night and Global Engagement



The Maldives will strengthen its presence at ITB Berlin 2026 with the return of the exclusive Maldivian Night and a dedicated international press conference, as part of its strategic momentum toward Visit Maldives Year 2027. The destination will showcase its tourism strength from 3rd to 5th March at Messe Berlin, the world's largest travel trade show.

A key highlight is the revival of the invitation-only Maldivian Night, co-hosted with Bank of Maldives (BML). The event will gather leading tour operators, airline partners, and international media to celebrate Maldivian hospitality and innovation, including the launch of BML Swipe, a new digital payment solution aimed at enhancing transaction convenience across the islands.

Visit Maldives will also host a high-level international press conference during ITB Berlin, where a major announcement is expected to outline the next phase of the Maldives' global tourism strategy beyond 2027.

Germany and the wider European market remain key contributors, with Germany recording 167,822 arrivals in 2025, while Switzerland and Austria ranked among the top 15 source markets. Through its enhanced participation, Visit Maldives aims to deepen partnerships, expand engagement, and reinforce the Maldives' position as a safe, sustainable, and premium destination.



## Visit Maldives Showcases the Sunny Side of Life at SATTE 2026



Visit Maldives marked a strong opening at SATTE 2026, which commenced on 25 February 2026 at the Yashobhoomi Convention Center in New Delhi, engaging key stakeholders to reinforce the Maldives' presence in the South Asian market.



As South Asia's leading travel trade exhibition, SATTE features over 2,100 exhibitors from more than 50 countries, providing access to high-value business opportunities. With India's outbound travel market valued at approximately USD 45 billion, the platform offers significant scope to expand partnerships and enhance destination visibility. Visit Maldives is participating alongside 22 co-exhibitors from the Maldivian tourism industry.



India remains one of the Maldives' top source markets, recording 130,805 arrivals in 2024 and 131,625 in 2025. The event supports continued engagement with tour operators, airlines, travel agents, and online platforms, while fostering new collaborations to drive year-round travel.

The Maldives pavilion features business meetings, promotional displays, and immersive visuals, alongside a trade survey to gather market insights. Visitors can also experience interactive elements, including a customised whale shark-themed bookmark reflecting the Maldives' Ocean Nation identity.











TOURISM RESEARCH & STATISTICS SECTION  
Ministry of Tourism and Environment  
5th Floor | Velanaage | Ameeru Ahmed Magu | Male' | Republic of Maldives

◆ [www.tourism.gov.mv](http://www.tourism.gov.mv) ✉ [stat@tourism.gov.mv](mailto:stat@tourism.gov.mv) ☎ +960 3022235 | 3022250 | 3022200



TOURISM RESEARCH & STATISTICS SECTION  
Ministry of Tourism and Environment  
5th Floor | Velanaage | Ameeru Ahmed Magu | Male' | Republic of Maldives

🌐 [www.tourism.gov.mv](http://www.tourism.gov.mv) ✉ [stat@tourism.gov.mv](mailto:stat@tourism.gov.mv) ☎ +960 3022235 | 3022250 | 3022200



